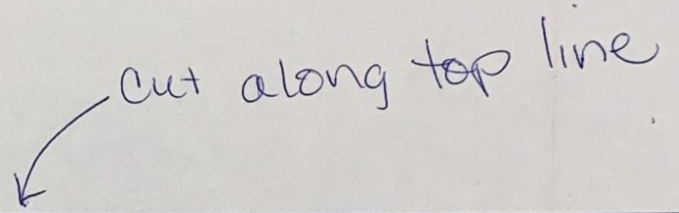


Cut along top line

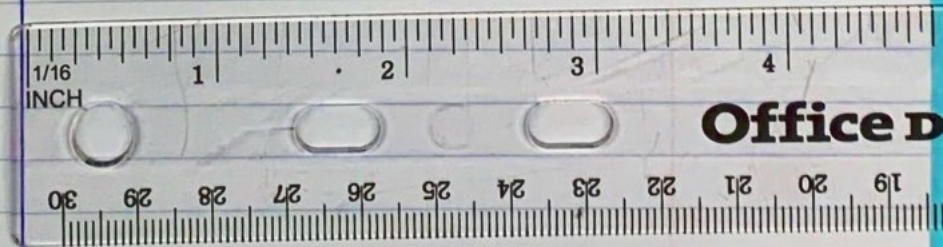
A handwritten instruction in blue ink, "Cut along top line", is written in the upper right quadrant of the page. A thin blue arrow originates from the word "top" and points downwards and to the left, ending at a horizontal line that spans the width of the page. The line is drawn in the same blue ink as the text.

↖ count down to 30th line
and cut off the bottom

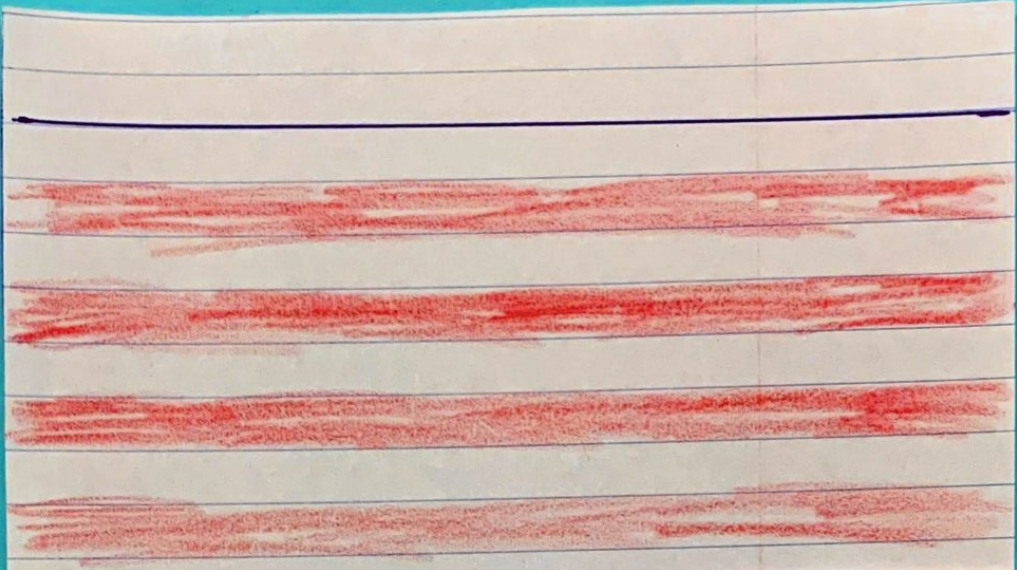
Draw a
line $4\frac{3}{4}$ "

From side
with out holes
Cut this line

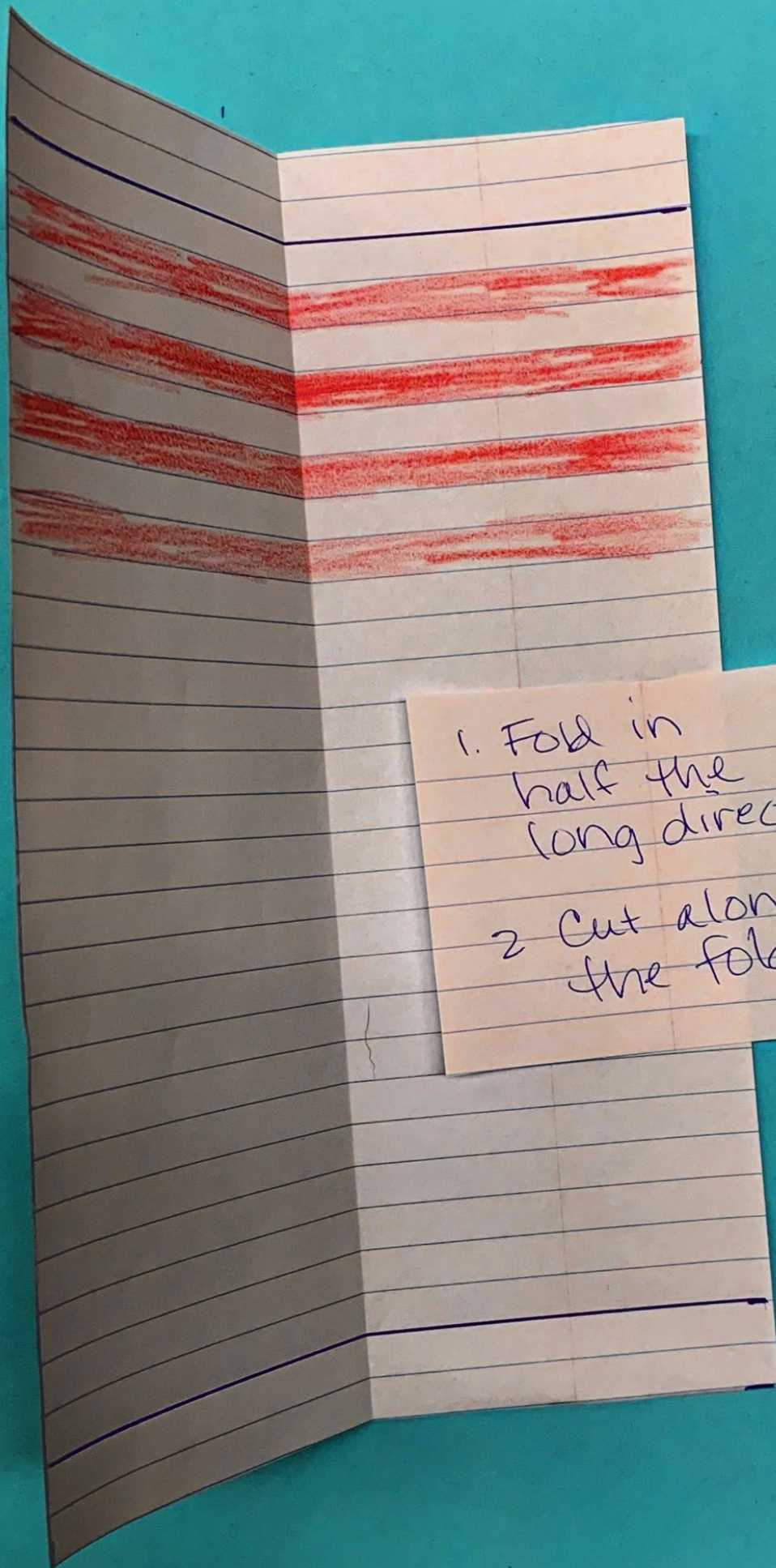
$4\frac{3}{4}$ " is a little
less than the
length of a
Sharpie.



Draw a line
2 lines away
from each
end.



Color every other
line Red with
a colored pencil
or pink highlighter
(any color will
do)



1. Fold in half the long direction
2. Cut along the fold

Full

Full

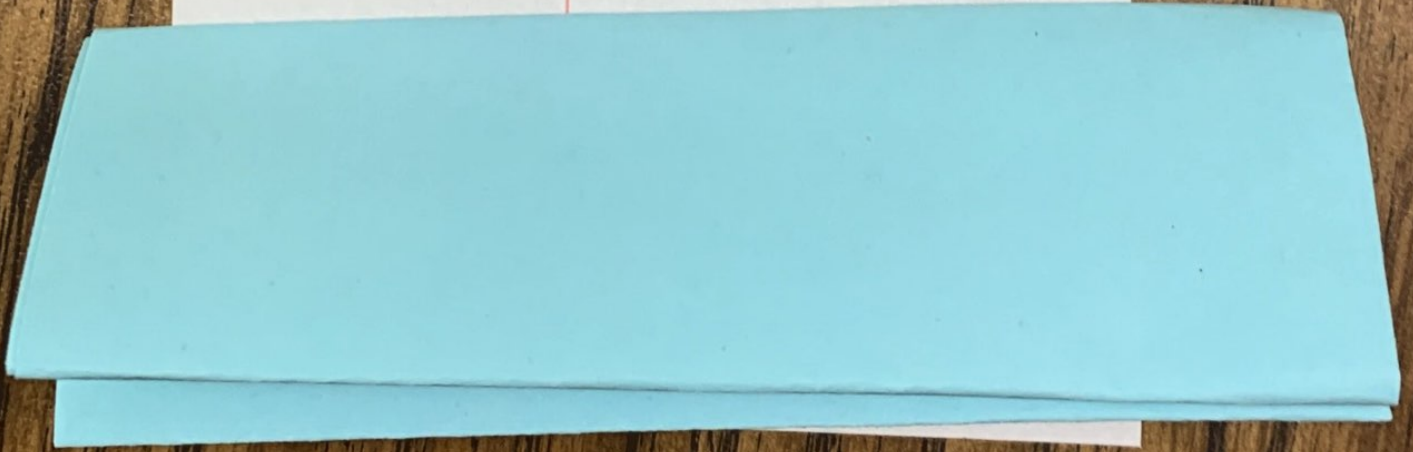
Label ends


Fold & glue to
back of model

Fold + Glue
to back of Model

Fold a 2nd
piece of
paper in half
(long direction)

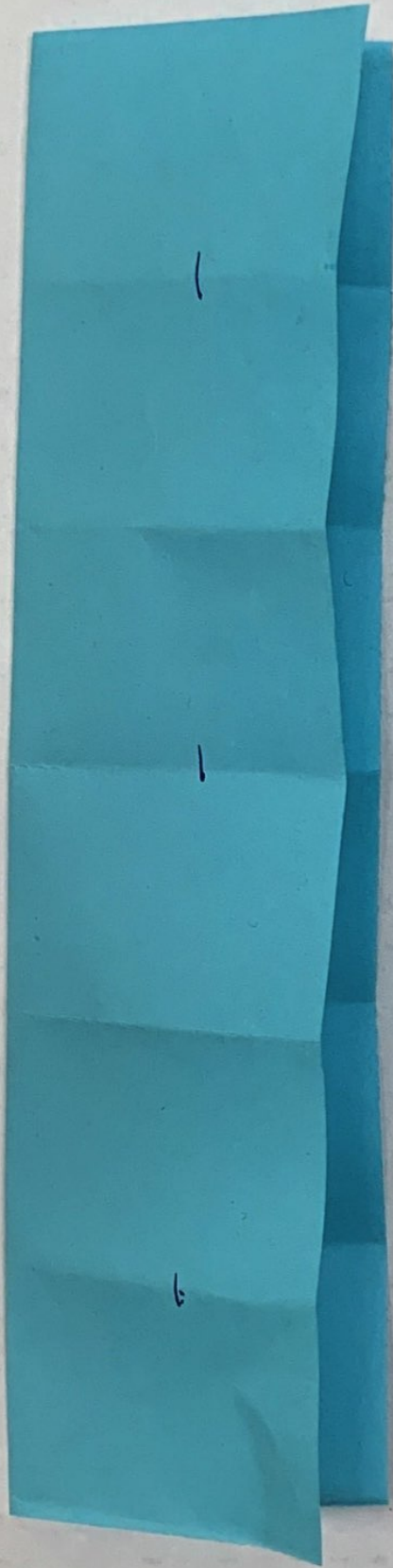
Fold the
paper 4
times



Unfold & 
Cut off the
bottom 2 folds

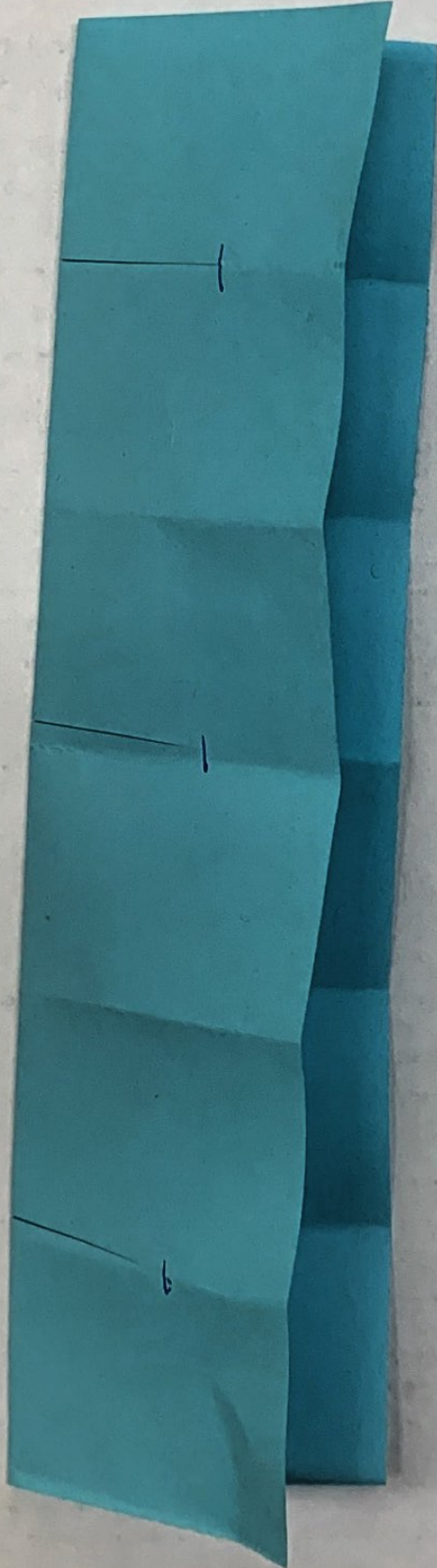
Cut
paper in
half along
center
fold

Folded edge



Fold
paper in
half
and
mark
approximately
2 thumb's
width
from
folded
edge
center
and
outer
fold
lines

folded edge



Cut from
folded edges
to marks
(3 cuts)

Use these papers to finish
the model using the video
instructions.

